

EQUIP TYPE *R390A/URR* EXP. NO.

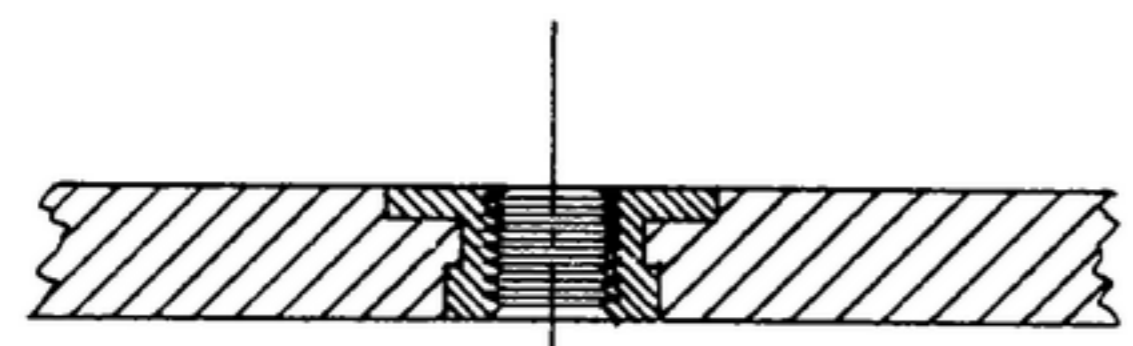
COL. 540 7934 003

NOTICE: WHEN GOVERNMENT DRAWINGS, SPECIFICATIONS, OR OTHER DATA ARE USED FOR ANY PURPOSE OTHER THAN IN CONNECTION WITH A DEFINITELY RELATED SYSTEM, THE UNITED STATES GOVERNMENT THEREBY INCURS NO RESPONSIBILITY AND ANY OPERATIONS WHATSOEVER. AND THE FACT THAT THE GOVERNMENT MAY HAVE FORMULATED, FURNISHED, OR IN ANY WAY SUPPLIED THE SAID DRAWINGS, SPECIFICATIONS, OR OTHER DATA IS NOT TO BE REGARDED BY ANY PERSON OR CORPORATION, OR ANY OTHER ENTITY OR PERSONS TO WARRANT, GUARANTEE, OR CONFIRMATION, OR CONVEYING ANY RIGHTS OR PERMISSION TO REPRODUCE, TRANSMIT, USE, OR SELL ANY PATENTED INFORMATION THAT MAY IN ANY WAY BE RELATED THERETO.

THIS DRAWING HAS BEEN PURCHASED BY THE GOVERNMENT AND MAY BE REPRODUCED AND USED IN CONNECTION WITH ANY GOVERNMENT PROGRAM OR SERVICE OPERATION.

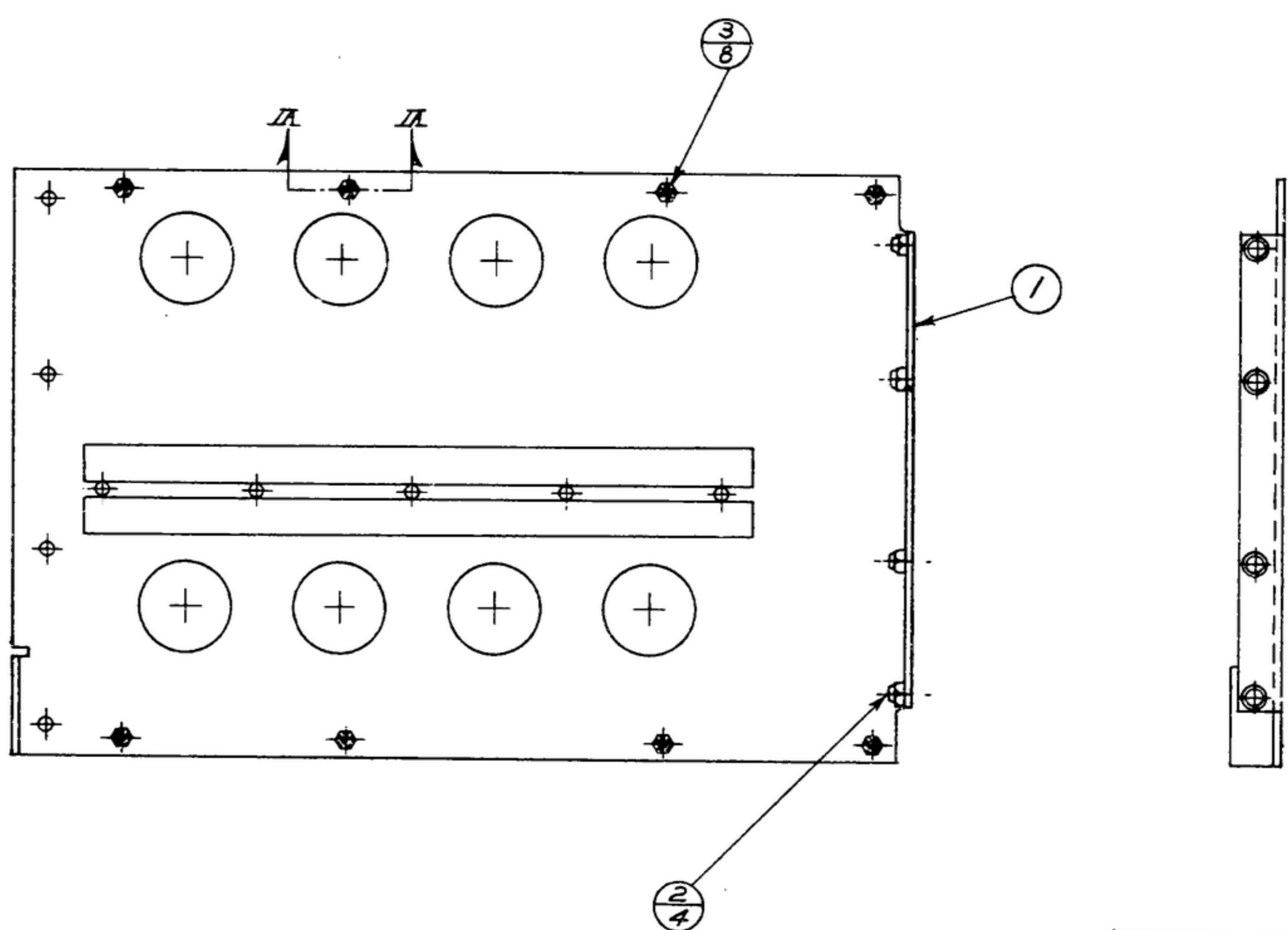
*FOR INFORMATION ONLY. CONTRACTOR MAY AT HIS OPTION DEVIATE FROM THESE PROCESS DETAILS.

REVISIONS			
SYM	DESCRIPTION	DATE	APPROVAL



SECTION II-II, SCALE 4/1

- NOTES:
1. PRESS (3) INTO (1) AS SHOWN.
 2. PRESS & ROLL (2) INTO (1) AS SHOWN.
 3. IN ALL SPLIT BALLOONS TOP FIGURE IS MATERIAL LIST ITEM INDICATOR & BOTTOM FIGURE IS QUANTITY.



COLLINS PART NO.	ITEM	QTY	PART NO.	DESCRIPTION	MATL	MATL SPEC
559 0257 005	3	8	SM-C-283166-A	NUT-INSERT CAPTIVE		
559 0257 002	2	4	SM-B-283164-2	NUT-STOP		
558 0474 004	1	1	SM-D-249122	FRAME-RIGHT SIDE		

LIST OF MATERIAL COLLINS PART NO. *558 0479 003*

COLLINS NO.	QTY	NEXT ASSY	USED ON
<i>558 0492 004</i>	<i>1</i>	<i>SM-D-249122</i>	<i>SC-DL-248775</i>

UNLESS OTHERWISE SPECIFIED:
 DECIMAL DIMENSIONS INCLUDING HOLE SIZES MAY VARY ±.008
 FRACTIONAL DIMENSIONS INCLUDING HOLE SIZES MAY VARY ±1/64
 MACHINED ANGLES MAY VARY ±.1°
 SHEARED ANGLES MAY VARY ±.25°
 BROKEN ANGLES MAY VARY ±.1°
 ECCENTRICITY BETWEEN ANY DIAMETERS ON THE SAME CENTERLINE SHALL NOT EXCEED .010 TOTAL INDICATOR READING.
 ALL DIMENSIONS ARE FINISH DIMENSIONS INCLUDING APPLIED FINISH AND ARE GIVEN IN INCHES.

COLLINS-RADIO CO.
 14214-PH-51-93
 SIGNAL CORPS
 REVIEWED *PME*
 APPROVED *HLV*
PME
 DATE *2 JAN 56* SCALE *1/2*

*FRAME A554-
 RIGHT SIDE*

DEPARTMENT OF THE ARMY
 SIGNAL CORPS ENGINEERING
 LABORATORIES
 FORT MONMOUTH NEW JERSEY
SM-C-249126